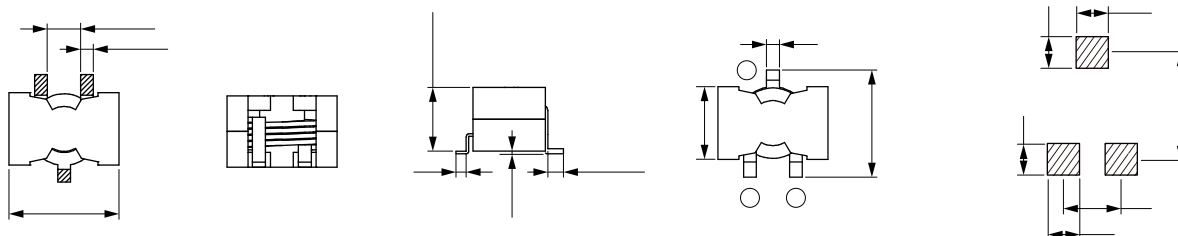




- High saturation current up to 100A
- Low losses with flat wire design
- Low core losses with MnZn core material
- Quantity: 100pcs

- High current DC/DC converter
- LC filter



| Part No | Inductance | Tolerance | Temperature Rise Current Typ. | Current Typ. | DC Resistance Typ. | DC Resistance Max. |
|--------------|------------|-----------|-------------------------------|--------------|--------------------|--------------------|
| THC2015-2R2M | 2.20 | ±20% | 28.0 | 55.0 | 1.70 | 2.20 |
| THC2015-2R7M | 2.70 | ±20% | 28.0 | 48.0 | 1.70 | 2.20 |
| THC2015-3R3M | 3.30 | ±20% | 24.0 | 48.0 | 3.28 | 3.80 |
| THC2015-4R7M | 4.70 | ±20% | 24.0 | 35.0 | 3.28 | 3.80 |
| THC2015-5R6M | 5.60 | ±20% | 24.0 | 30.0 | 3.28 | 3.80 |
| THC2015-6R8M | 6.80 | ±20% | 18.0 | 34.0 | 6.60 | 7.30 |
| THC2015-8R2M | 8.20 | ±20% | 18.0 | 29.0 | 6.60 | 7.30 |
| THC2015-100M | 10.0 | ±20% | 18.0 | 23.0 | 6.60 | 7.30 |
| THC2015-150M | 15.0 | ±20% | 16.0 | 18.0 | 8.60 | 9.50 |
| THC2015-220M | 22.0 | ±20% | 16.0 | 13.0 | 8.60 | 9.50 |
| THC2015-330M | 33.0 | ±20% | 16.0 | 9.00 | 8.60 | 9.50 |
| THC2015-470M | 47.0 | ±20% | 13.0 | 7.00 | 12.3 | 15.0 |

Operating Temperature: -40°C to +125°C

Temperature Rise Current: the actual value of DC current when the temperature rise is T40°C

Saturation Current that will cause initial inductance to drop approximately 20%

