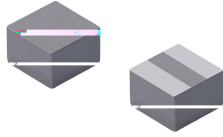


# SPM Series

## SMT Power Metal Inductor

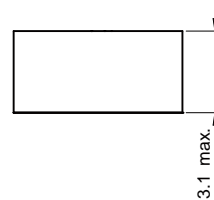
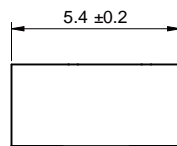
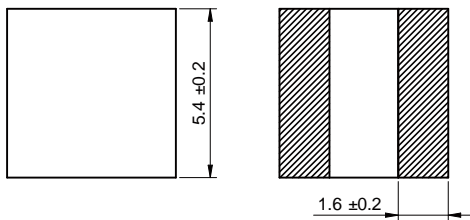
### Size 5030



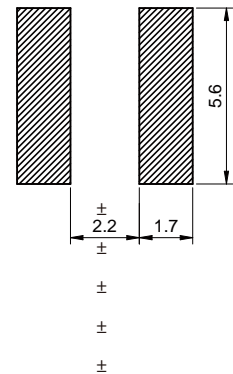
#### FEATURES

- Large current, Low DC-resistance, High efficiency by magnetic metal powder
- Low acoustic noise and low leakage flux noise by shielded construction
- Halogen Free, 100% Lead(Pb) Free  
RoHS compliant.
- Operating temperature:  $-40\text{ }^{\circ}\text{C} \sim 125\text{ }^{\circ}\text{C}$
- Quantity: 1000 pcs/reel

#### Dimensions: [mm]



#### Land Pattern: [mm]

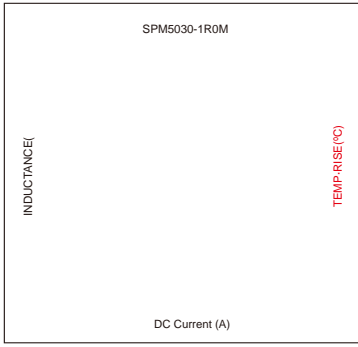


#### Electrical Properties:

Saturation Current that will cause initial inductance to drop approximately 20%

	8.7	7.9	11.5	10.0
	7.0	7.2	15.9	13.8
	5.9	6.0	22.7	19.7
	4.9	4.6	36.9	32.1
	3.9	4.0	67.0	58.2

# Typical Electrical Characteristics:



DC Current (A)

