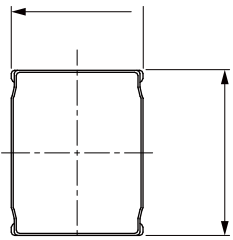


NRSM Series

Wire Wound SMD Power Inductor
Size 252010

Dimensions: [mm]

Land Pattern: [mm]



Electrical Properties:

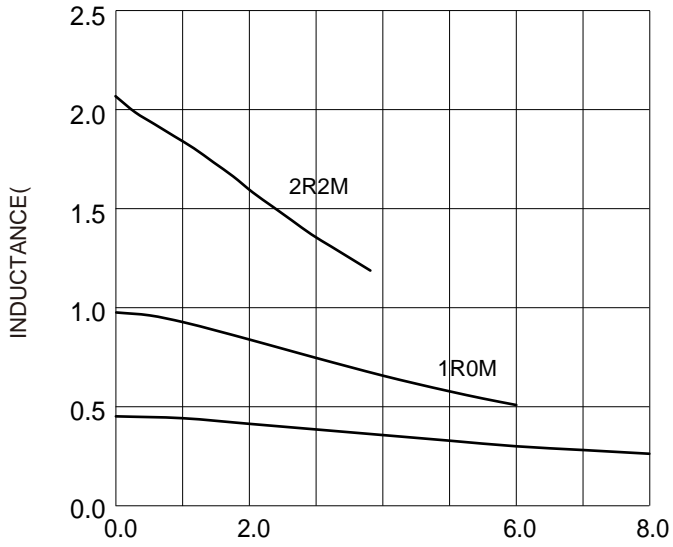
Saturation Current that will cause initial inductance to drop approximately 30%

°C

°C.

Typical Electrical Characteristics:

Inductance VS. Current Characteristics:



Temperature Rise VS. Current Characteristics:

