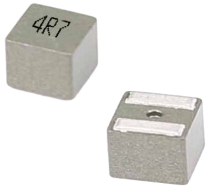


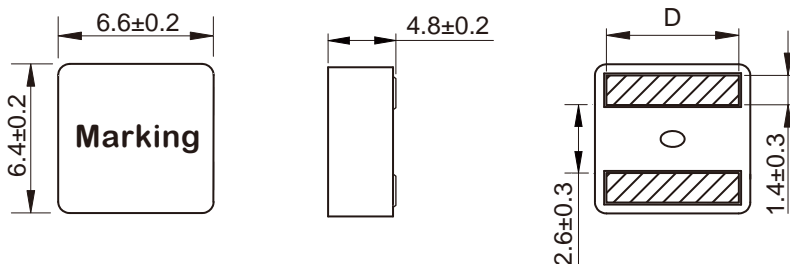
Wire Wound Molded SMD Power Inductors Size 6050



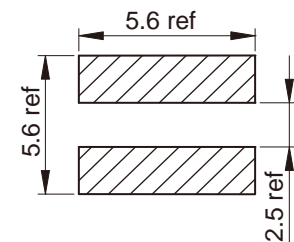
- So saturation
- High current, low DCR, high efficiency
- Very low acoustic noise and very low leakage flux noise
- High reliability
- 100% Lead (Pb)-Free and RoHS compliant
- Operating temperature -55~+125°C (Including self-temperature rise)
- Quantity: 800pcs

- Note PC power system, incl. IMVP-6
- DC/DC converter

Dimensions: [mm]



Land Pattern: [mm]



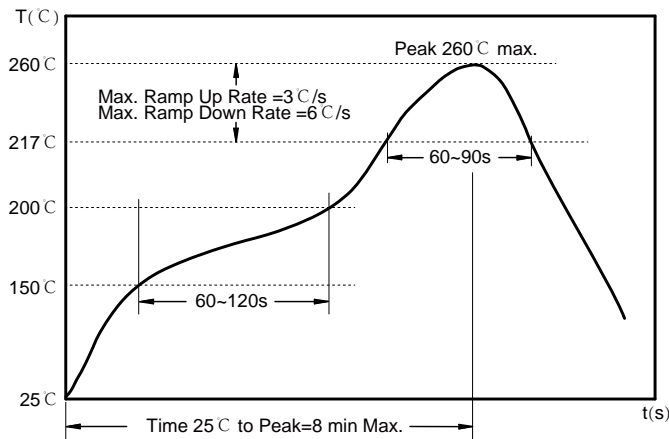
Electrical Properties:

| Part No | Inductance @ 100kHz/0.1V (μ H) | Tolerance | Saturation Current Typ. (A) | Saturation Current Max. (A) | Temperature Rise Current Typ. (A) | DC Resistance Max. (m Ω) | D (mm) |
|---------------|---|-----------|--------------------------------------|--------------------------------------|--|---|-----------|
| MDTE6050-R82M | 0.82 | ±20% | 24.0 | 20.0 | 21.0 | 4.18 | 5.3±0.3 |
| MDTE6050-1R0M | 1.00 | ±20% | 23.0 | 18.0 | 20.0 | 4.52 | 5.3±0.3 |
| MDTE6050-1R2M | 1.20 | ±20% | 22.0 | 16.0 | 18.0 | 5.83 | 5.3±0.3 |
| MDTE6050-1R5M | 1.50 | ±20% | 19.5 | 14.5 | 17.0 | 6.30 | 5.3±0.3 |
| MDTE6050-1R8M | 1.80 | ±20% | 18.5 | 13.5 | 16.0 | 7.10 | 5.3±0.3 |
| MDTE6050-2R2M | 2.20 | ±20% | 16.0 | 12.0 | 13.0 | 8.50 | 5.2±0.3 |
| MDTE6050-3R3M | 3.30 | ±20% | 12.5 | 10.0 | 11.0 | 12.5 | 5.2±0.3 |
| MDTE6050-4R3M | 4.30 | ±20% | 11.0 | 8.5 | 9.0 | 16.2 | 5.2±0.3 |
| MDTE6050-4R7M | 4.70 | ±20% | 10.5 | 8.0 | 8.5 | 18.4 | 5.2±0.3 |

Saturation Current will cause L to drop approximately 30%

Temperature Rise Current: The actual value of DC current when the temperature rise is $\Delta T=40^{\circ}\text{C}$

Soldering Reflow:



Preheat condition: 150 ~200°C / 60~120 sec.

Allowed time above 217°C: 60~90 sec.

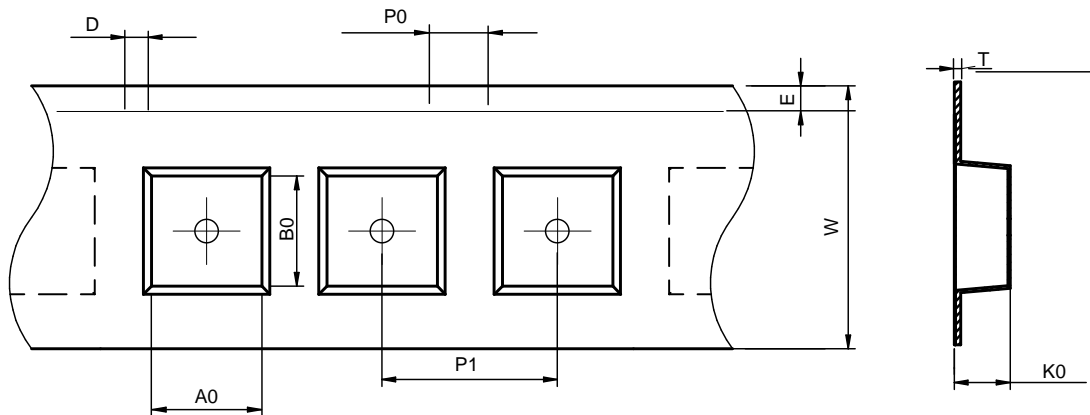
Max temperature: 260°C.

Max time at max temperature: 10 sec.

Allowed Reflow time: 2x max.

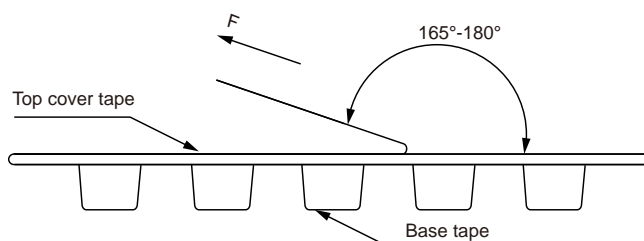
Packaging Information:

Tape Dimension:



| Series | A0 (mm) | B0 (mm) | D (mm) | P0 (mm) | P1 (mm) | W (mm) | K0 (mm) | E (mm) | T (mm) |
|----------|---------|---------|---------|---------|----------|----------|---------|----------|-----------|
| MDTE6050 | 7.0±0.1 | 6.8±0.1 | 1.5±0.1 | 4.0±0.1 | 12.0±0.1 | 16.0±0.3 | 5.3±0.1 | 1.75±0.1 | 0.35±0.05 |

Peel force of top cover tape:

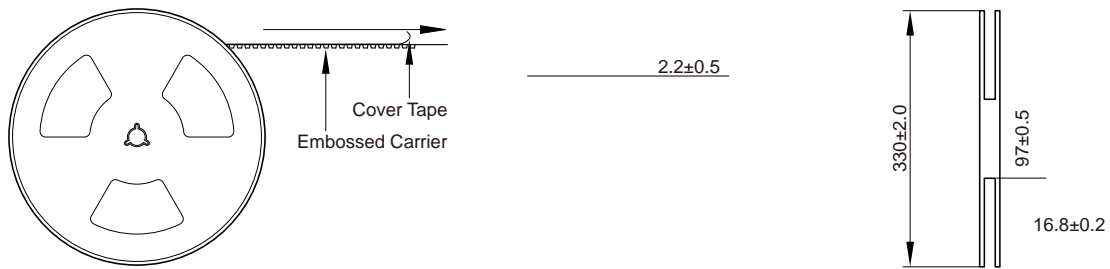


The peel force of top cover tape shall be between 0.1 to 1.3 N

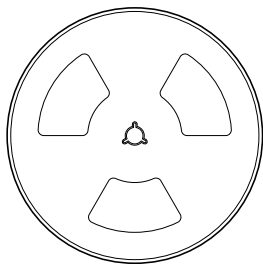
Product Marking:

| | |
|---------|-----------------------|
| Marking | Printing (Inductance) |
|---------|-----------------------|

Reel Dimension: [mm]



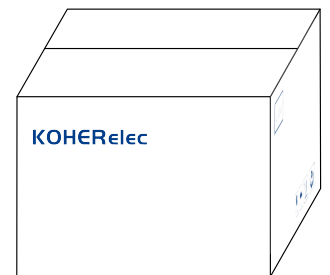
Packaging Quantity:



800 Pcs/Reel



2 Reel /Inner box(1600 Pcs)



3 Inner box/Carton box(4.8K Pcs)

Cautions and Warnings:

Storage Conditions:

- The storage period is within 15 months after the completion of production. Be sure to follow the storage conditions

-

-

-

Operation Instructions:

-

-

-

-