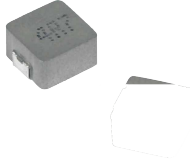


MDE Series
Molding Power Inductors
Size 0320



FEATURES

-
- , , high efficiency
-
- Operating temperature -40°C ~ 125°C
- Quantity: 3000pcs

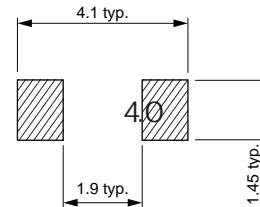
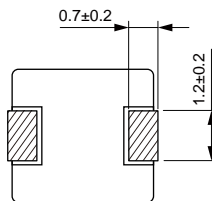
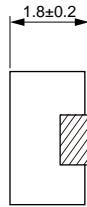
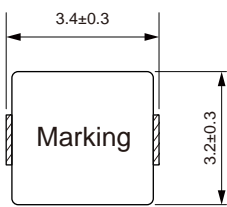
APPLICATION

- Note PC power system
-

Dimensions: [mm]

(mΩ)

Land Pattern: [mm]



145

Electrical Properties:

422

1.4

	(μH)				
MDE0320-R47M	0.47				
MDE0320-4R7M	4.70				

Saturation Current will cause L to drop approximately 30%

Temperature Rise Current: The actual value of DC current when the temperature rise is ΔT=40°C