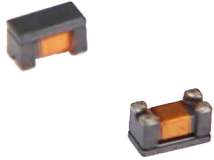


BCMA Series

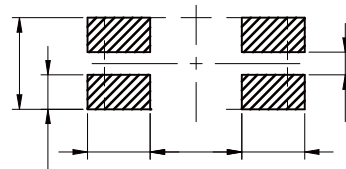
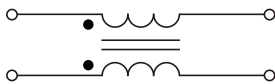
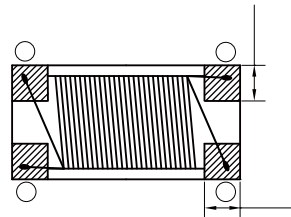
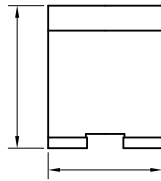
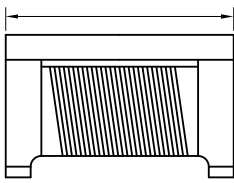


FEATURES

- Impedance variation: Extensive lineup are available for compatibility with various usages
- Common mode filter or Signal Line
- Operating temperature range: -40 to +125°C
- AEC-Q200 qualified
- Quantity: 2000pcs

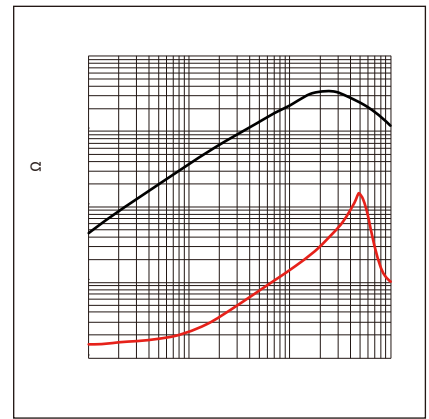
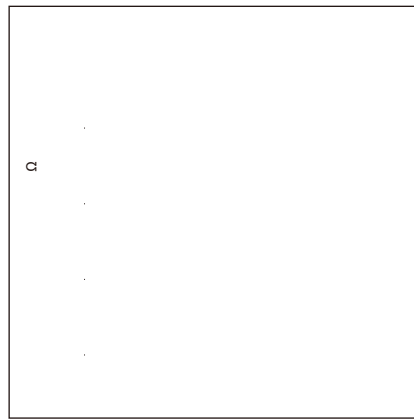
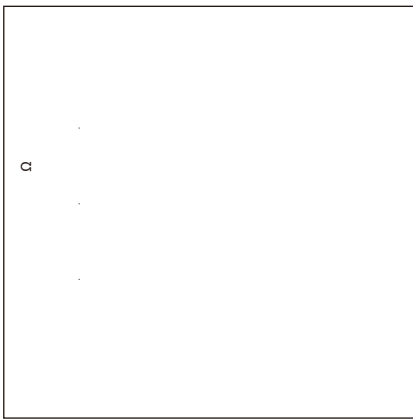
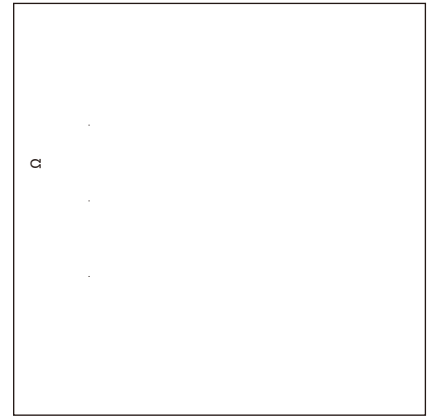
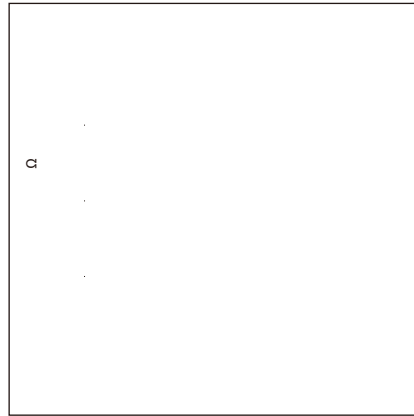
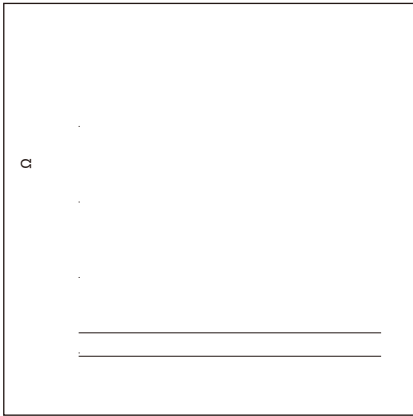
APPLICATION

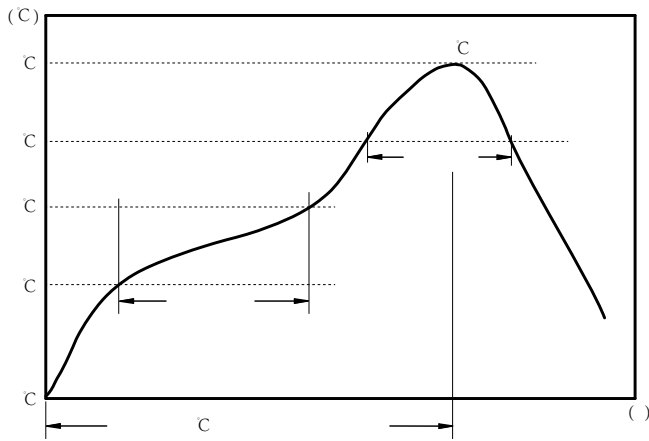
- Radiated noise suppression for car multimedia accessories (MO)



Part No	Impedance @ 100 MHz	Tolerance	Temperature Rise Current Max.	DC Resistance Max.	Rated Voltage
BCMA3216-900N					
BCMA3216-161N					
BCMA3216-261N					
BCMA3216-601N					
BCMA3216-102N					
BCMA3216-222N					





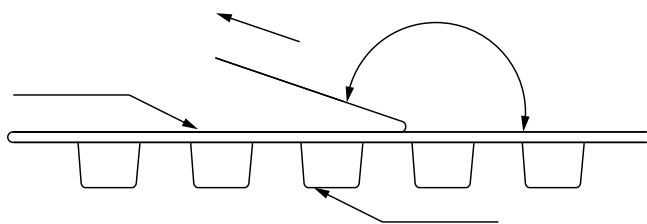


c
c
c

:



BCMA3216	1.88 typ.	3.50 typ.	1.5±0.1	4.0±0.1	4.0±0.1	8.0±0.3	2.1 typ.	1.75±0.1	0.20±0.1



The peel force of top cover tape shall be between 0.1 to 1.0 N

:

